

Potamilus alatus glochidia.

Ex: freshwater drum (*Aplodinotus grunniens*)
Marmet Dam, Kanawha River, West Virginia

James Joy

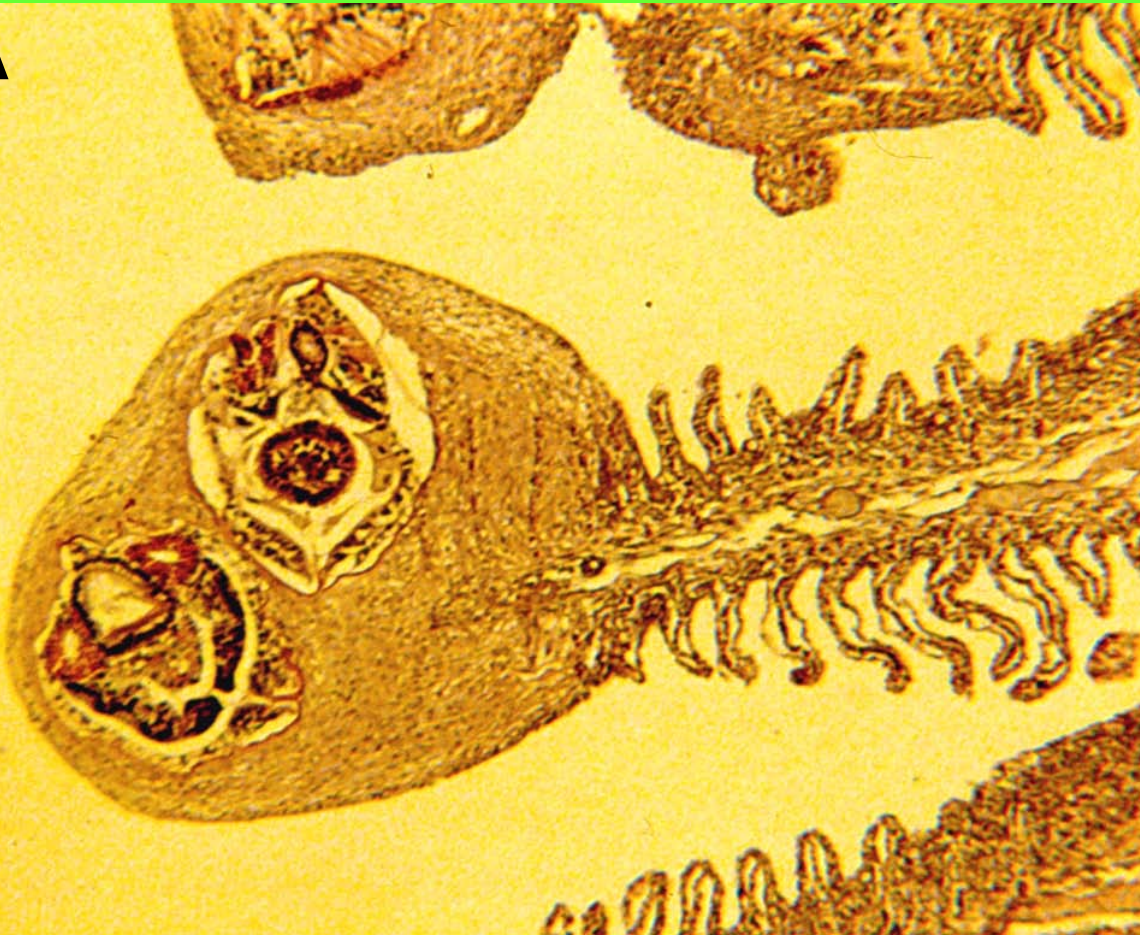
Department of Biological Sciences

Marshall University

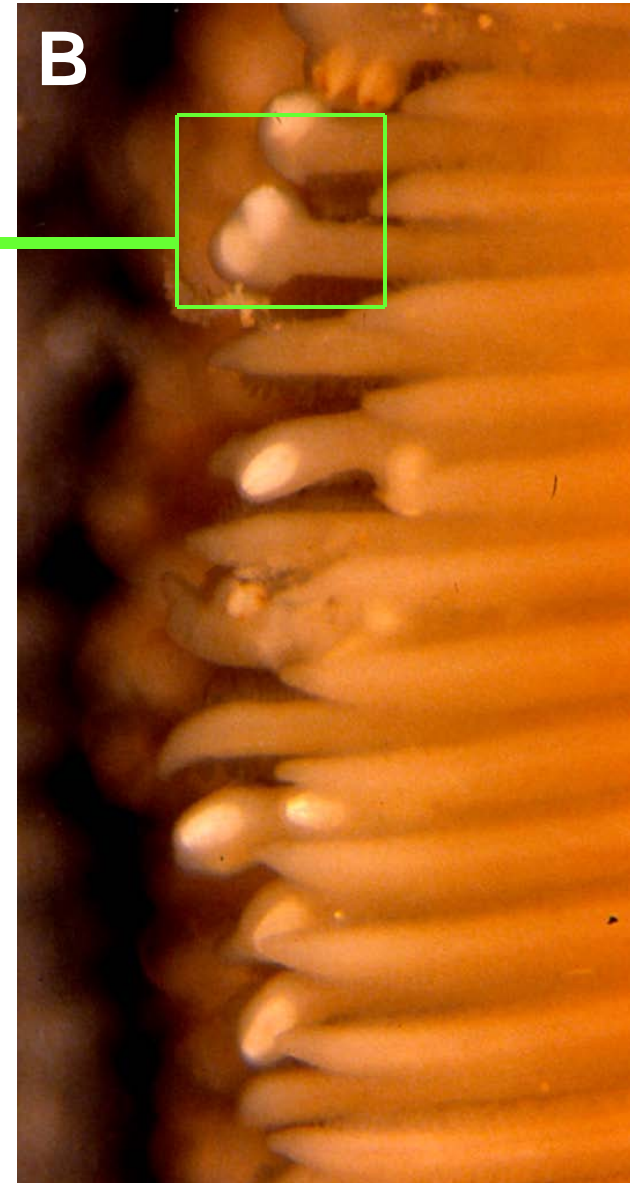
Huntington, WV 25755

Gill filament "clubbing":
(A) tissue section, 5 μ m, H&E;
(B) gross view.

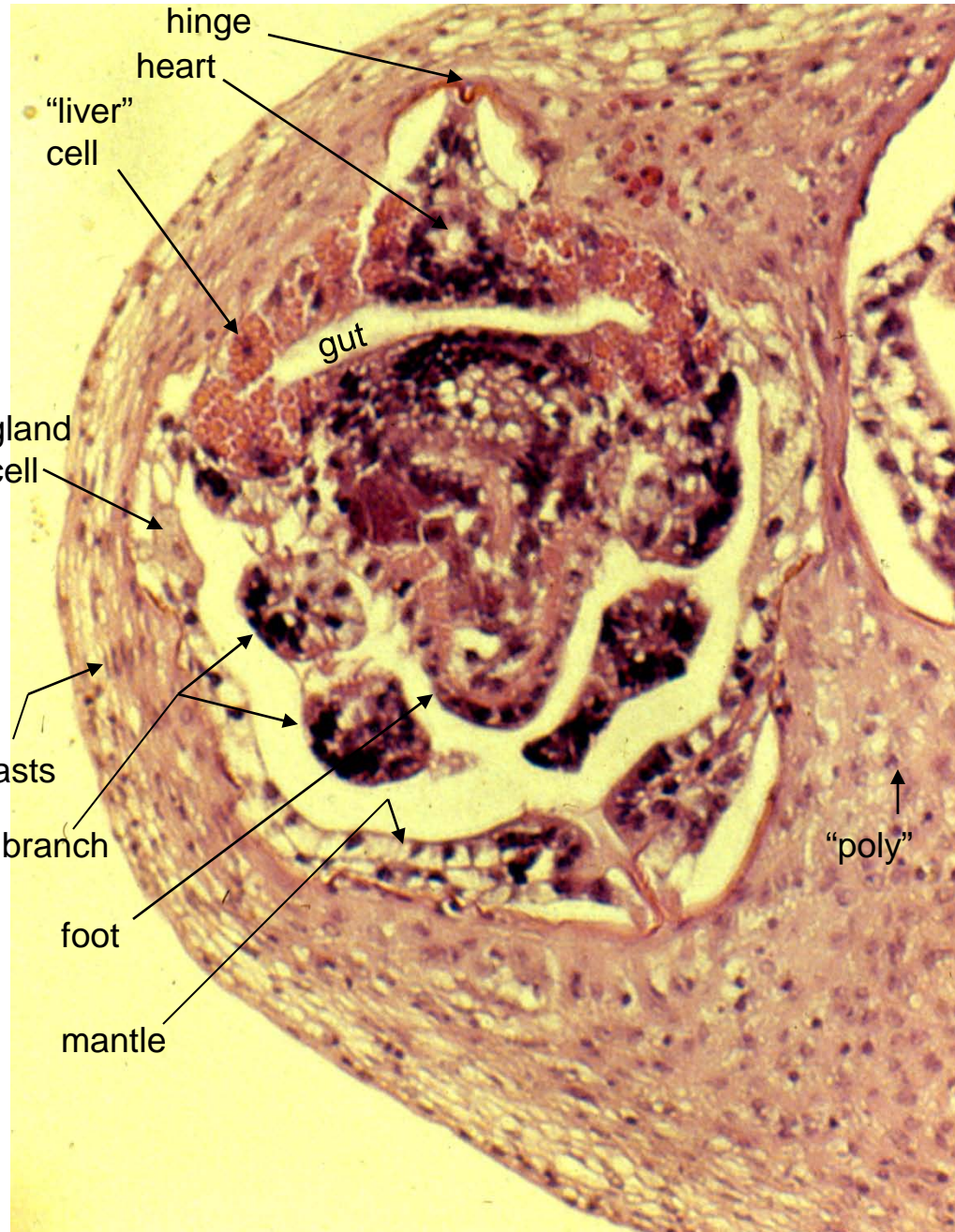
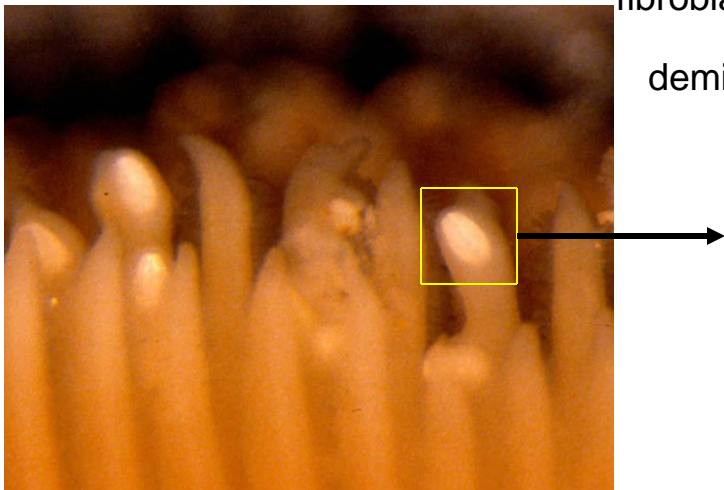
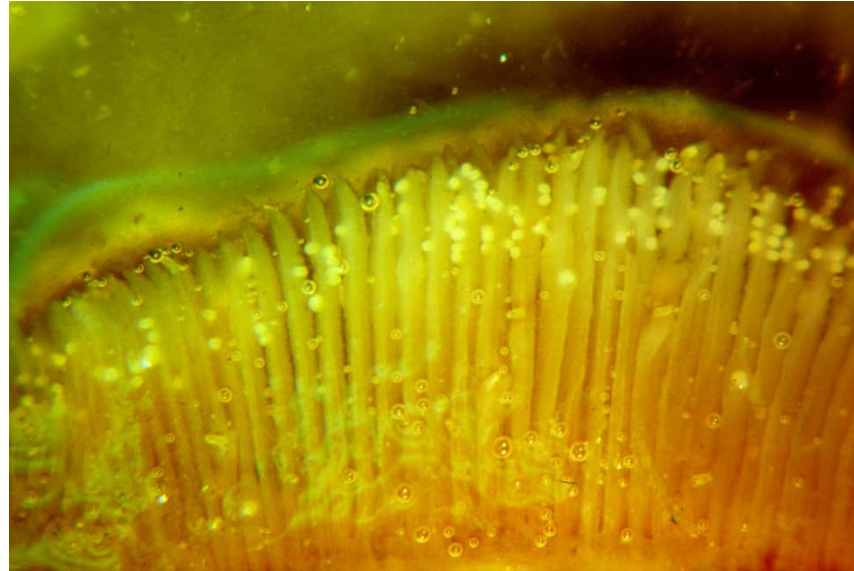
A



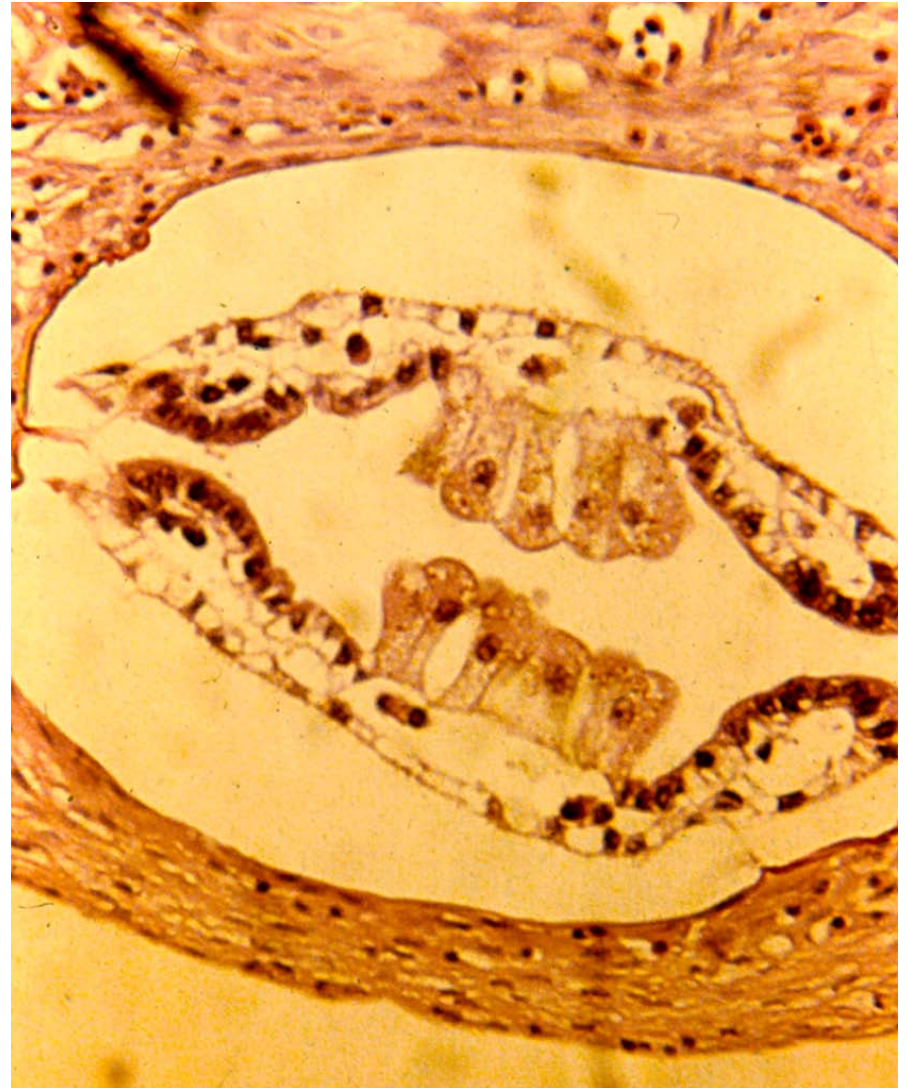
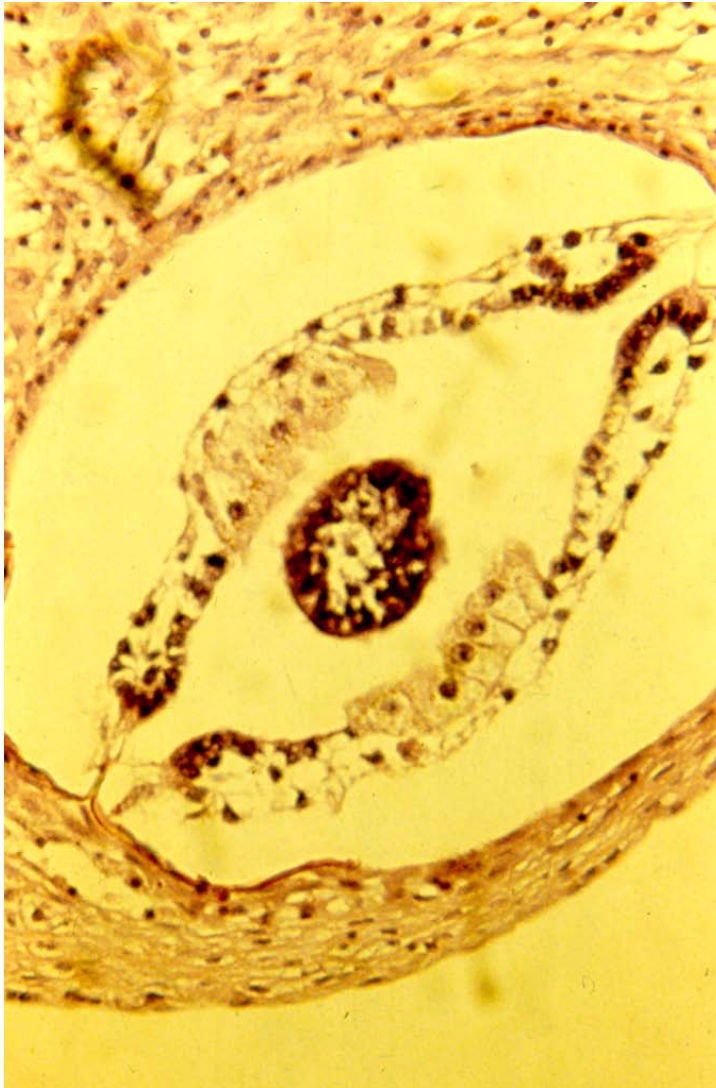
B



P. alata, glochidia



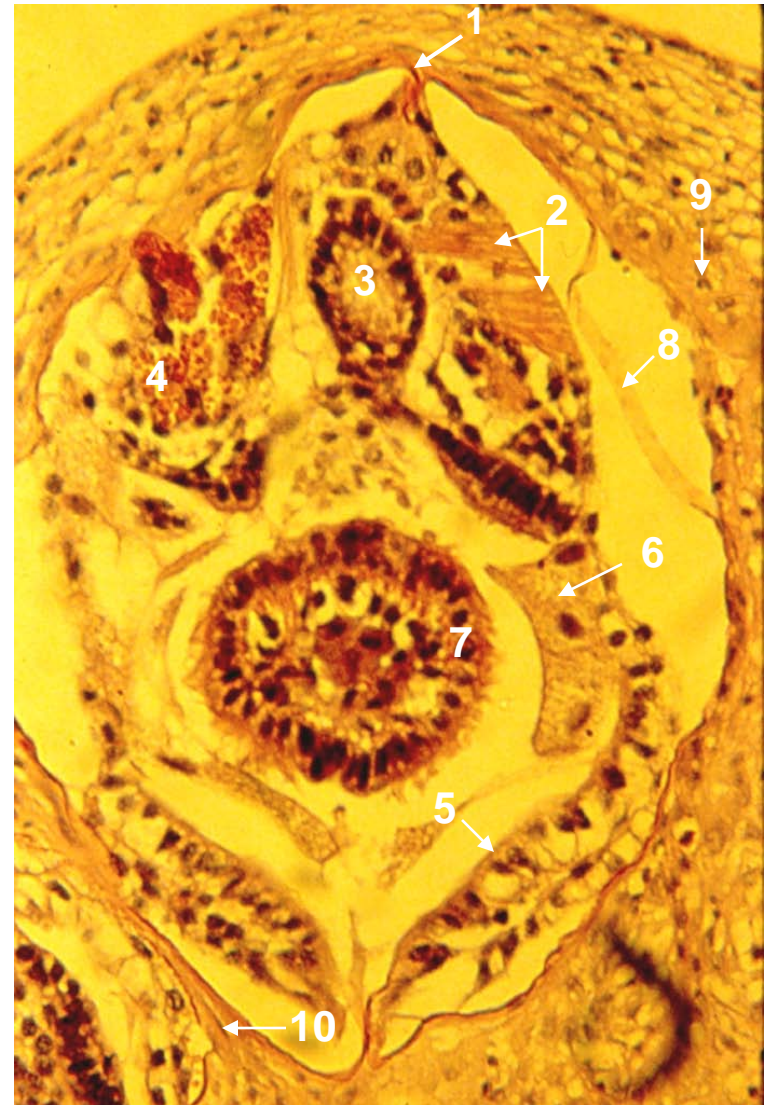
P. alatus, glochidium showing “mushroom-shaped body” in mantle tissue near end of body.



P. alatus, glochidia.

Legend:

1. hinge
2. adductor muscle
3. heart
4. "liver"
5. cuboidal cell of mantle
6. mucous cell of mantle
7. foot
8. "shell"
9. "poly" (host)
10. fibrocyte (host)



P. alatus “hatchet-shaped” glochidium.

